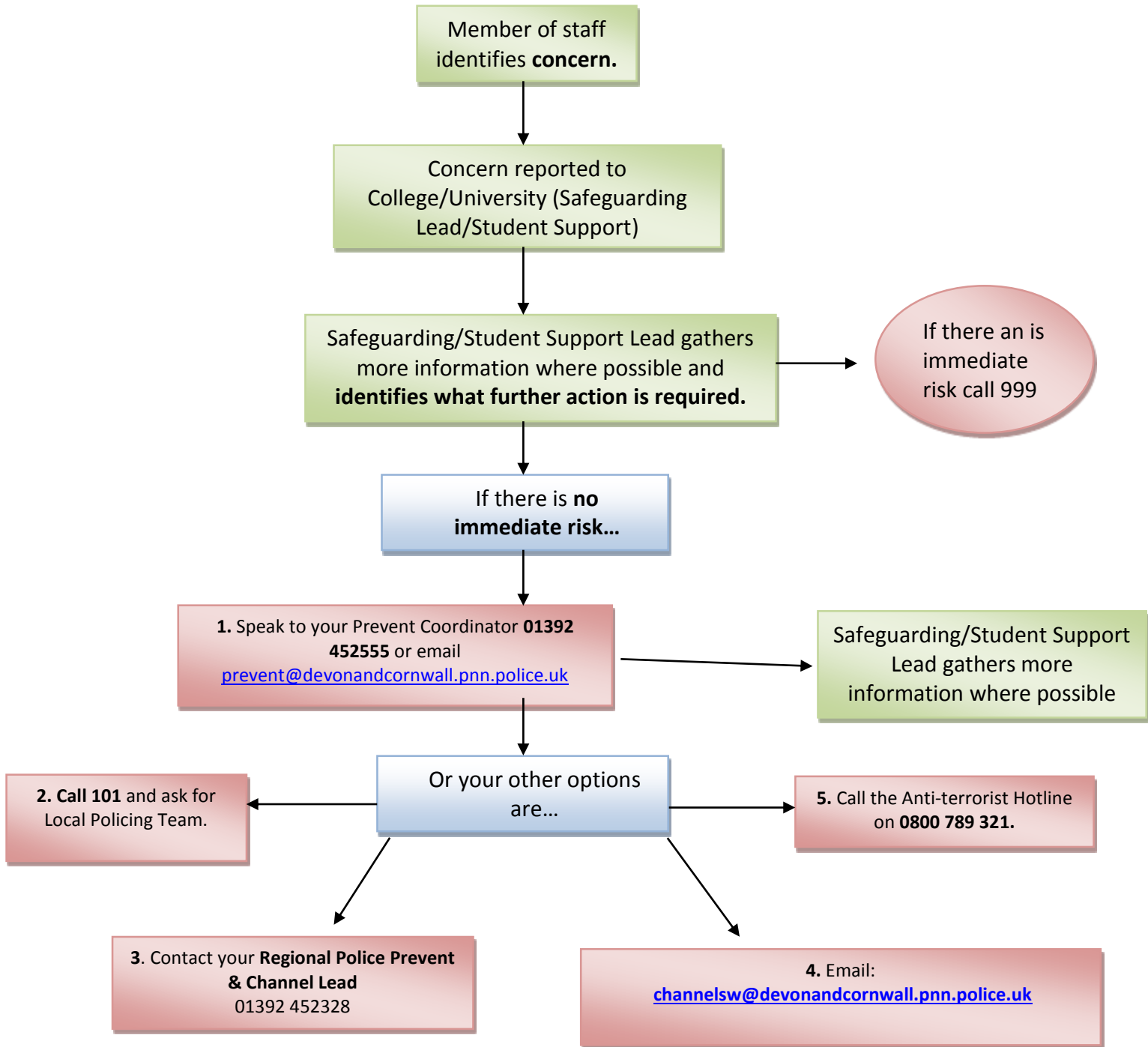


# Prevent and Channel

## Process map for reporting a concern of a vulnerable individual

It is important for you as a member of staff to know where to go if you have a concern that someone may be on the route to radicalisation. Below is a flow chart which aims to show the process as to which you can follow:



Once a referral has been made and enters the Channel process, the below process map illustrates what happens next...

Further information gathering with your institution and other key agencies that the individual is involved with. Are there shared concerns between partners? Is there a vulnerability to radicalisation?

No

If it is deemed there is low risk –further action within normal support. Key agency progresses with further monitoring.

Yes

Police will organise a Multi-Agency Channel meeting which will be made of key partners. The meeting will be chaired by your Local Authority.

It is important to remember that consent is gained with the individual to be part of Channel support and intervention.

Implement support plan depending on level of risk.

Regularly review process – Channel Panel members work together to review progress and reduce risks.

The individual will exit the Channel process when all partner agencies feel that the vulnerability to radicalisation has been completely removed or significantly lessened.

Once a referral has exited the process, it will be reviewed at 6 and 12 months. If concerns remain, the individual can be re-referred.