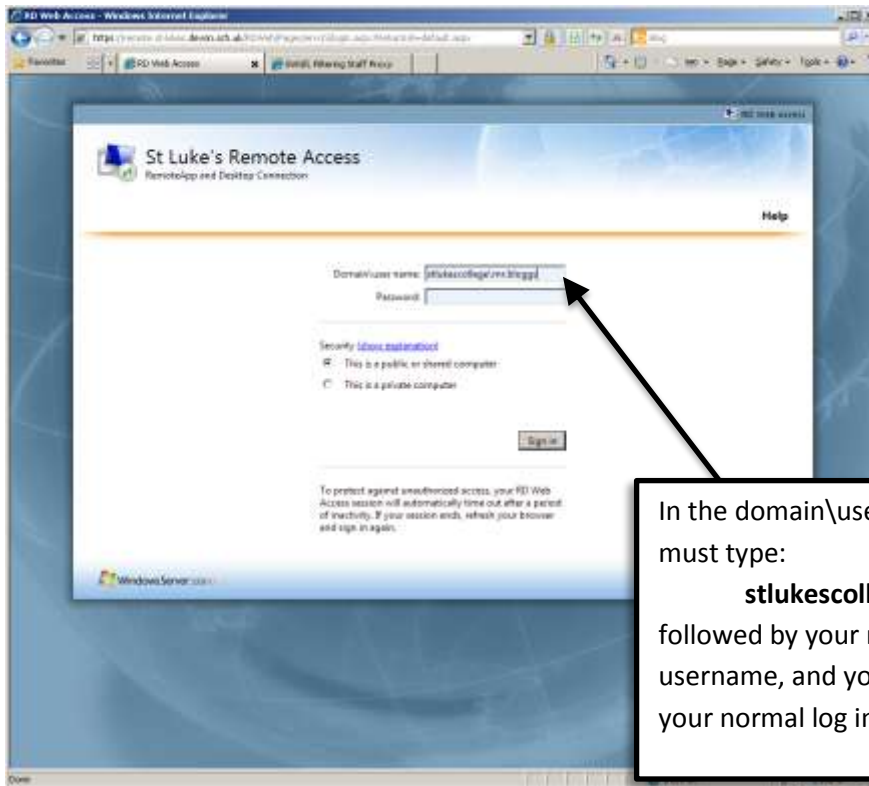


Remote access to the St Luke's network drives

This currently only works in Internet Explorer.

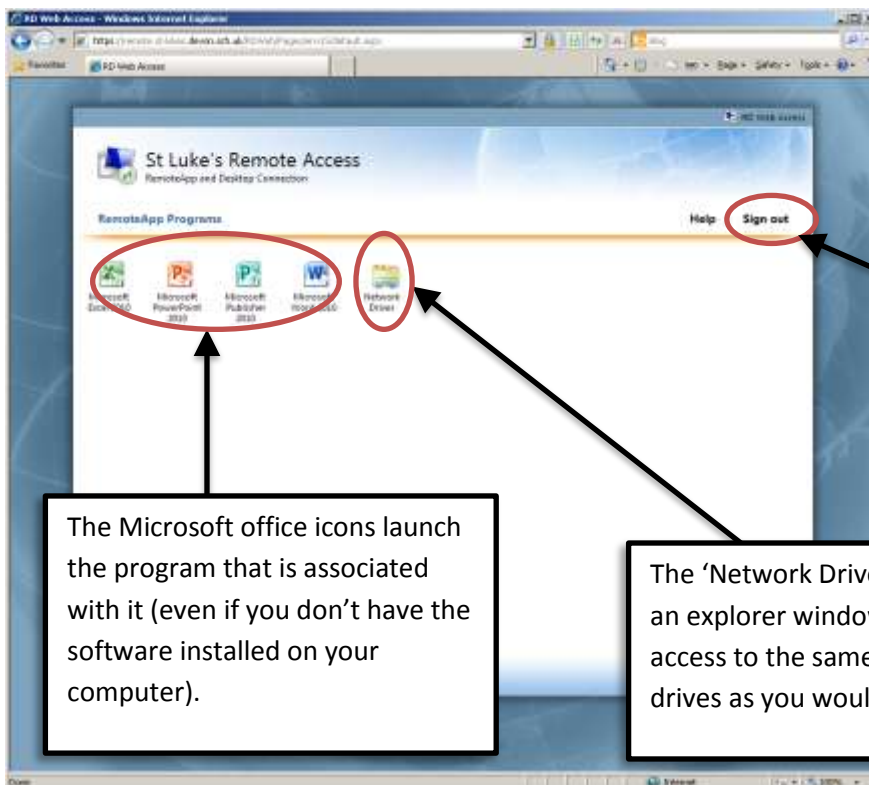


In the domain\username box you must type:

stlukecollege

followed by your normal st lukes username, and your password is your normal log in password

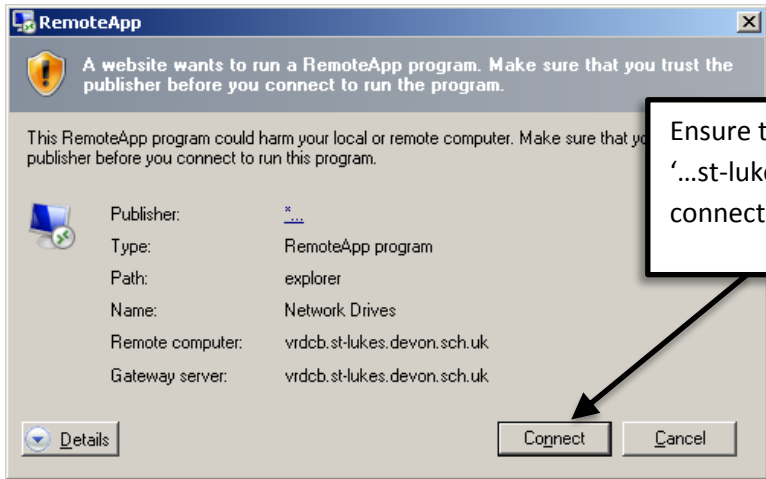
You may get a message saying 'This webpage wants to run the following add-on...', click 'allow'.



Click here to log out when you've finished

The Microsoft office icons launch the program that is associated with it (even if you don't have the software installed on your computer).

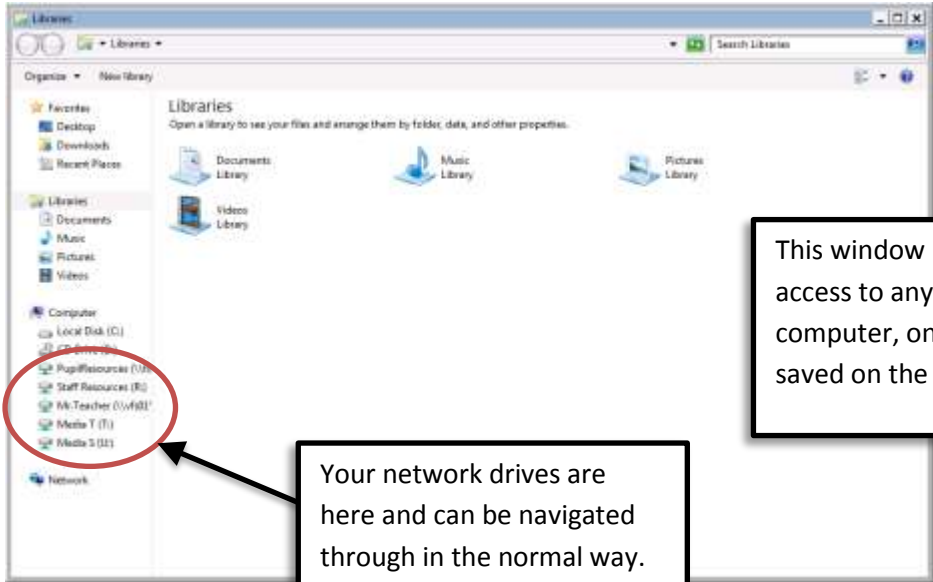
The 'Network Drives' icon opens an explorer window so you have access to the same network drives as you would in college.



Ensure the bottom two lines say '...st-lukes.devon.sch.uk' and click connect



This window pops up as the system checks your credentials. If it takes a long time for you to log on in college it will take just as long to log on here.



This window DOES NOT give you access to any of the files on your computer, only those which are saved on the college network!

Your network drives are here and can be navigated through in the normal way.